

The Following Lesson is Excerpted from:

A FRESH APPROACH TO

Mallet Percussion

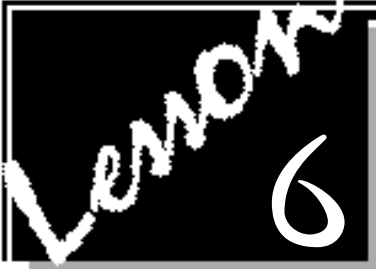
BY: MARK WESSELS



Copyright © 1996 by Mark Wessels Publications

To order, contact:

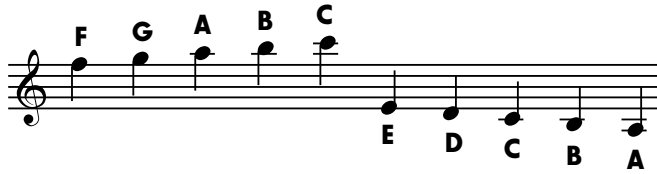
Mark Wessels Publications • 433 Derby Lane • DeSoto, TX 75115
email: mwessels@aol.com • phone: 972-223-0142 • fax: 972-274-6288
or on the web at: <http://www.TheDrumClub.com>



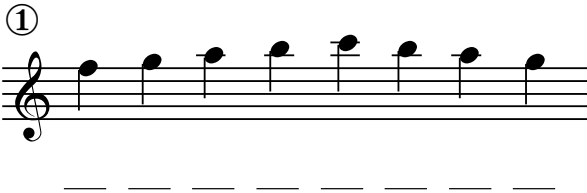
Ledger Lines

Music Theory

Ledger Lines are used to extend the range of the staff (much like rungs on a ladder). Notice that you will use the musical alphabet to "walk" up or down this musical ladder.

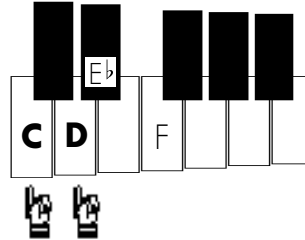
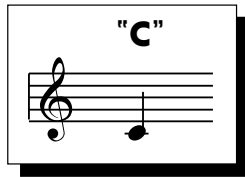


Fill in the blanks to spell the correct note names



The new note **D** is the first note BELOW the staff, the new note **C** uses a **ledger line**.

New Note



16



The Whole Note A Whole Note or Whole Rest receives 4 beats in quarter time.

Music Theory



Draw in the bar lines, then write the counting under the notes. Clap and count this line to a metronome when you finish.



