

The Following Lesson is Excerpted from:

A FRESH APPROACH TO

Mallet Percussion

BY: MARK WESSELS



Copyright © 1996 by Mark Wessels Publications

To order, contact:

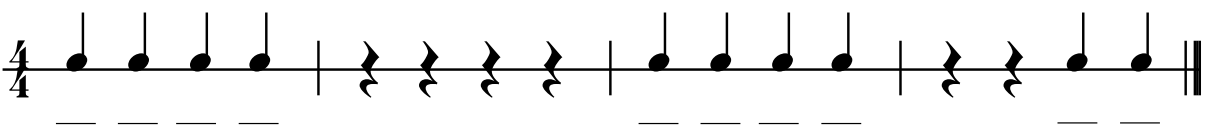
Mark Wessels Publications • 433 Derby Lane • DeSoto, TX 75115
email: mwessels@aol.com • phone: 972-223-0142 • fax: 972-274-6288
or on the web at: <http://www.TheDrumClub.com>

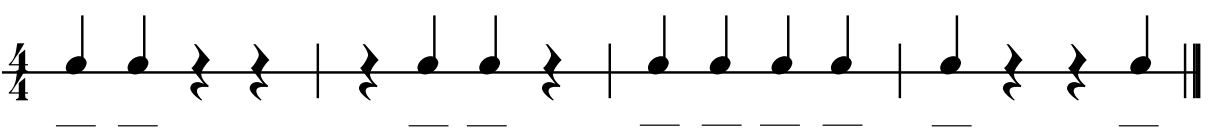
Lesson 2

Music Theory

Learning to Count Quarters in $\frac{4}{4}$ Time.

Each quarter note and rest receives ONE BEAT in a "Quarter" Time Signature. Write in the counts under the quarter notes in the following exercises, then clap the rhythm while you count out loud.

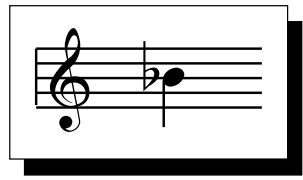
① 

② 

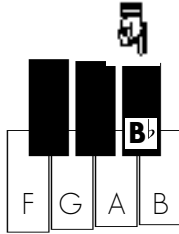
Music Theory

A Flat Sign

lowers the pitch of a note one **half step**. A HALF STEP is the distance from any key to the very next key above or below.

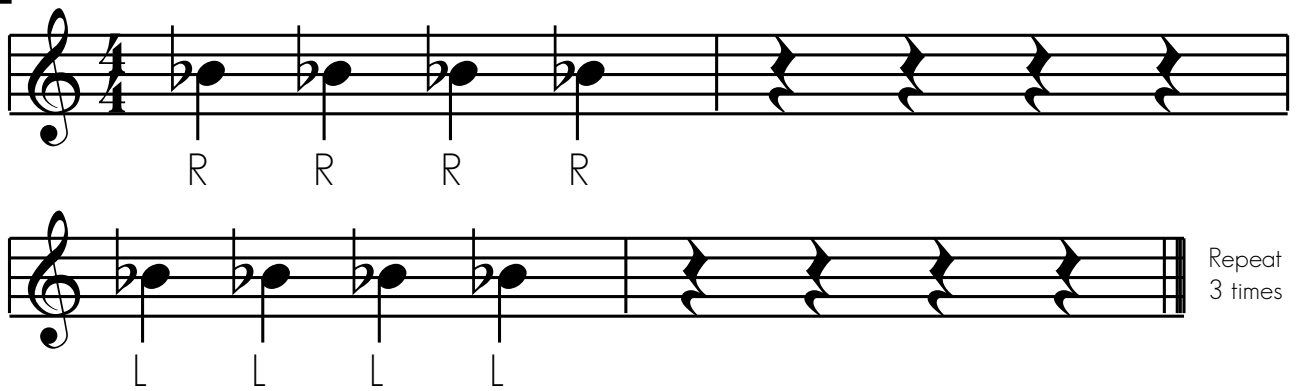


OUR FIRST NOTE:  (B flat) is one half step lower than the note B.



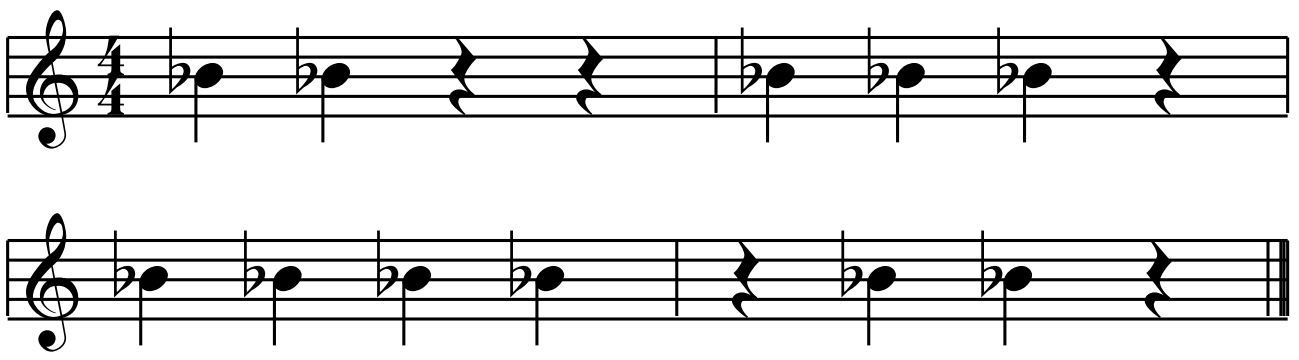
The note **B** is the top note in the group of THREE accidentals.

1



2

Try to play this line without looking down at all! Play the entire line with the right hand, then a 2nd time with the left.



Pencil Games

Write the name of each note from the treble staff in the blank provided. The **Appendix**, located on page 45, also provides several "Speed Tests" for finding notes on the treble staff.



① — — — —



② — — — —



③ — — — —



④ — — — —



⑤ — — — —

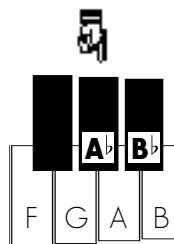


⑥ — — — —

New Note

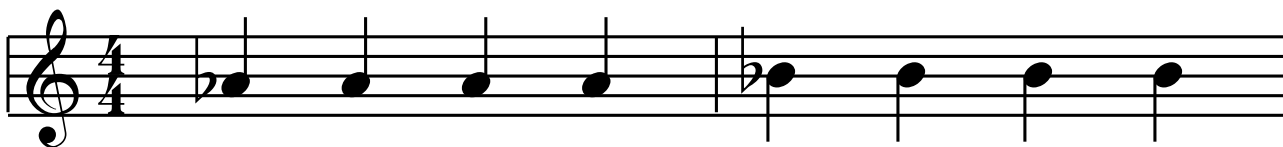


The NEW NOTE **A^b** (A Flat) is one half step lower than the note A.

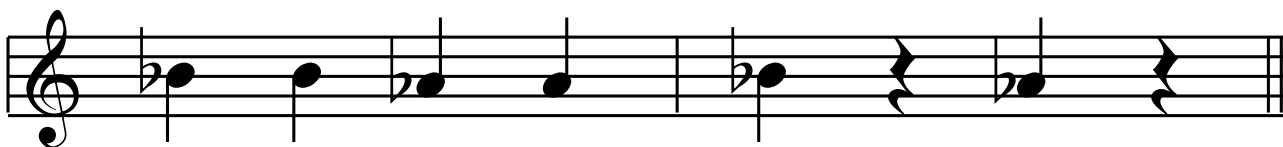
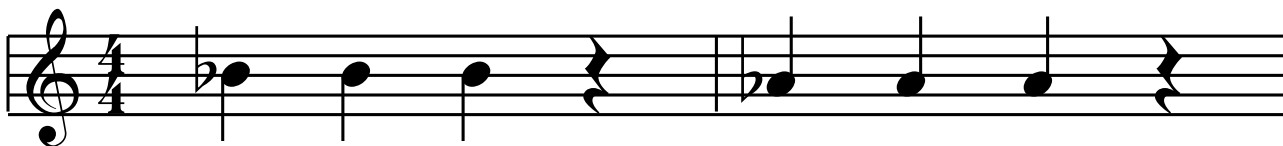


The note **A^b** is the MIDDLE note in the group of three accidentals.

3 Whenever a flat appears in a measure, it remains in effect for the ENTIRE measure.



4 Position the music stand as close to the keyboard as possible. Lower the stand until it almost touches the accidentals.



Appendix: Lesson Two

Speed Test #1: Write the name of each note in the blank provided.



1. _____



2. _____



3. _____



4. _____

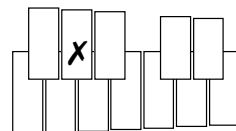
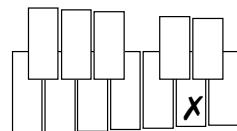
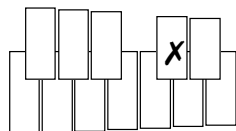
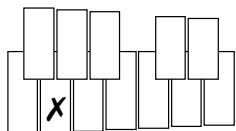
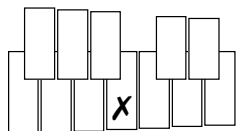


5. _____

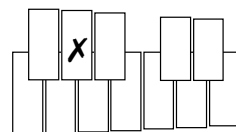
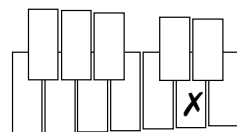
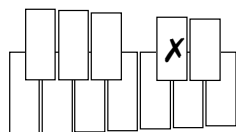
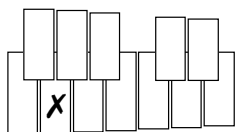
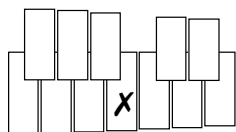


6. _____

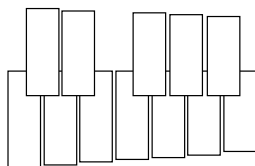
Speed Test #2: Put an "X" on the note that is UP a half step from the note indicated.



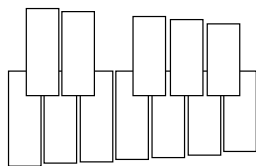
Speed Test #3: Put an "X" on the note that is DOWN a half step from the note indicated.



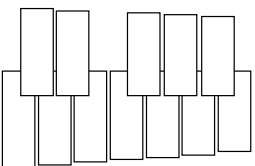
Speed Test #4: Remember that a **Flat** lowers a pitch one half step. Find the FLAT note on the keyboard below.



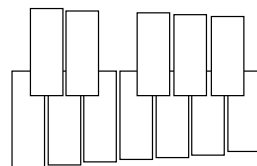
1. **B \flat**



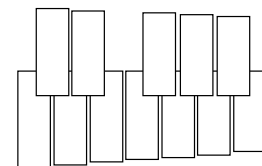
2. **A \flat**



3. **D \flat**



4. **G \flat**



5. **E \flat**

Music Reading Exercise: This exercise will give you extra practice on the **A \flat** & **B \flat** that you learned in Lesson 2.

