

The Following Lesson is Excerpted from:

A FRESH APPROACH TO

Mallet Percussion

BY: MARK WESSELS



Copyright © 1996 by Mark Wessels Publications

To order, contact:

Mark Wessels Publications • 433 Derby Lane • DeSoto, TX 75115
email: mwessels@aol.com • phone: 972-223-0142 • fax: 972-274-6288
or on the web at: <http://www.TheDrumClub.com>



Learning the Basics

Before we start using the keyboard, there are some very important aspects of the musical language that you need to learn.

Music is written on a **STAFF**. It has five lines.



This is a **TIME SIGNATURE**
There are four beats in a measure
The Quarter Note gets one beat

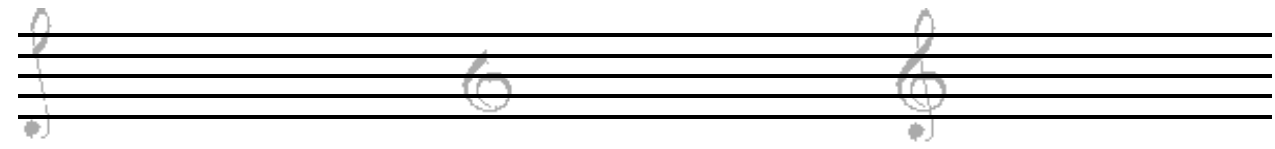


QUARTER NOTES tell you when to play.

Pencil Games

It's time to practice what you've just learned, so get a pencil!

① Learn to draw the **TREBLE CLEF**.

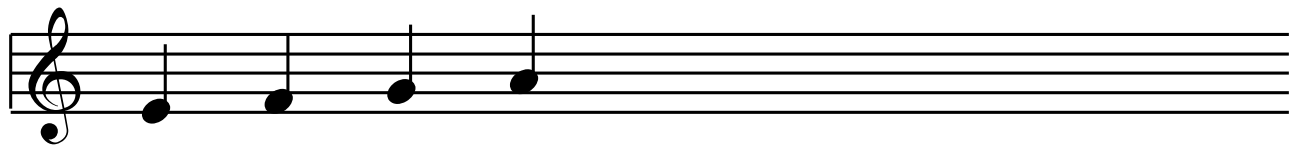


Trace the first loop & tail, then try 3 of your own.

Now trace the bottom loop. Draw 3 that look as good!

Use both steps to trace the Treble Clef. Practice on two or three of your own.

② Draw some Quarter Notes



On quarter notes below the middle line, the stem attaches to the **RIGHT** side of the note head and goes **UP**. Practice on a few quarter notes **BELOW** the middle line.

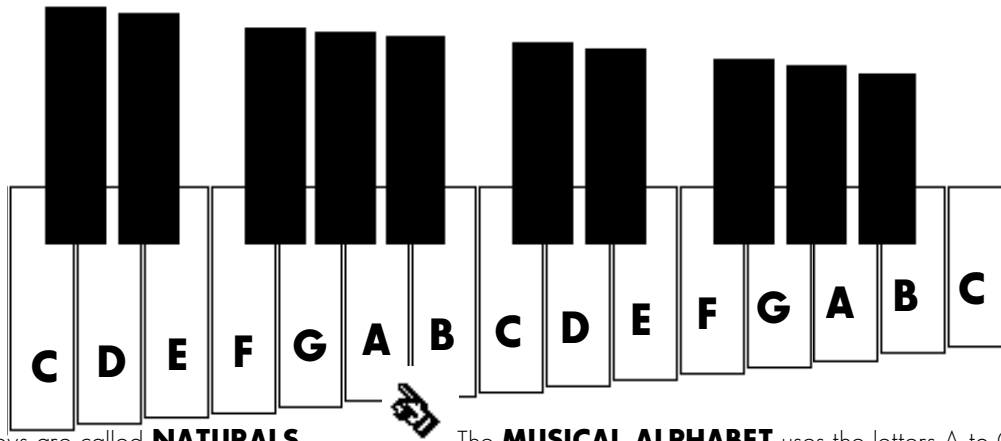


Now draw a few quarter notes on or above the middle line. The stem on these notes should attach to the **LEFT** side of the note head and go **DOWN**.

Step 2: Learning the Musical Alphabet - introducing the keyboard!

The raised keys are called **ACCIDENTALS** and are arranged in groups of two or three. You can use these accidentals

the naturals.



The lower keys are called **NATURALS**.

The **MUSICAL ALPHABET** uses the letters A to G

Pencil Games

Fill in the blanks to show your knowledge of the musical alphabet. You must be able to go forwards (UP the alphabet) and backwards (DOWN the alphabet).

FORWARDS:

- ① A _ _ _ _ G
 ② C _ _ _ _ B

BACKWARDS:

- ③ G _ _ _ _ A
 ④ D _ _ _ _ E

Step 3: Using the Musical Alphabet on the Treble Staff

The **LINES** of the treble staff spell: **E** **G** **B** **D** **F**
 Elvis' **G**uitar **B**roke **D**own **F**riday

The **SPACES** of the treble staff spell: **F** **A** **C** **E**
"F-A-C-E"

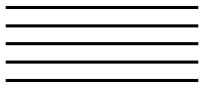
Pencil Games

Fill in the note names for the quarter notes in the following blanks.

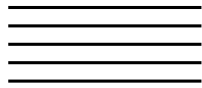


Appendix: Lesson One

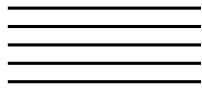
Pencil Game: Draw one of each of the following on the staff provided:



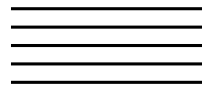
Treble Clef



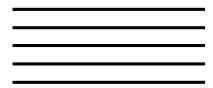
Bar Line



Time Signature



Double Bar Line



Quarter Note

Pencil Game: Fill in the blanks to show your knowledge of the musical alphabet (UP the alphabet and DOWN the alphabet).

FORWARDS:

① A _ _ _ _ _ ② F _ _ _ _ _ ③ C _ _ _ _ _

BACKWARDS:

④ A _ _ _ _ _ ⑤ F _ _ _ _ _ ⑥ C _ _ _ _ _

Speed Test #1: Write the name of each note in the blank provided.



1. _ _ _ _ _



2. _ _ _ _ _



3. _ _ _ _ _



4. _ _ _ _ _

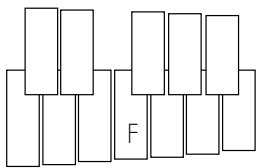


5. _ _ _ _ _

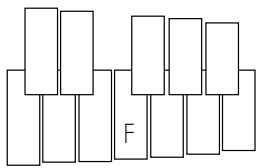


6. _ _ _ _ _

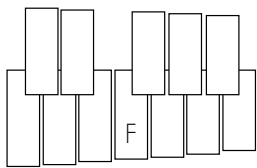
Speed Test #2: Use the musical alphabet to find the note on the keyboard. The note "F," which is provided for you, is the first natural key BELOW the group of three accidentals.



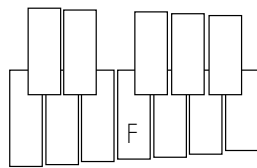
1. **G**



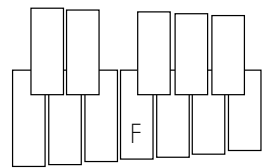
2. **C**



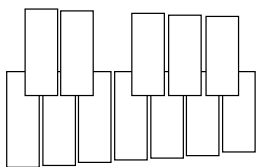
3. **A**



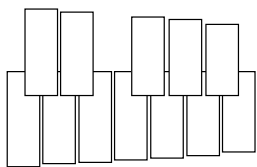
4. **D**



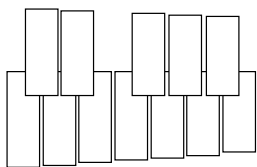
5. **B**



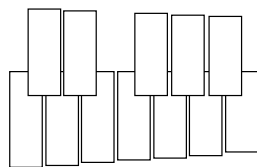
6. **E**



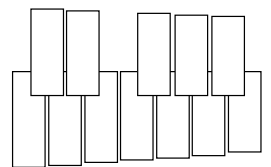
7. **F**



8. **D**



9. **C**



10. **G**